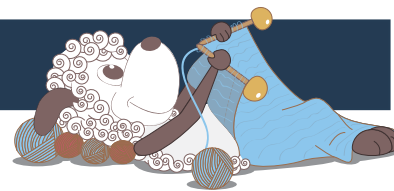


Frigg - a big, soft cables sweater



Design: Rachel Søgaard

A big soft sweater knitted in the lovely Naturgarn combined with a strand of Tilia kidmohair for gorgeous, subtle depth of colour and extra softness. Many other color combinations than this would give beautiful results. Perhaps bright yellow kidmohair on a grey wool or white kidmohair on soft pink wool.

1st English edition - December 2016 © Filcolana A/S
English translation: Signe Strømgaard

Materials

600 (700) 800 (900) g Naturgarn by Filcolana in color 101

75 (100) 100 (125) g Tilia by Filcolana in color 340
10 mm circular needle and double-pointed needles

Sizes

S (M) L (XL)

Measurements

Sweater, width: 105 (113) 121 (129) cm

Total length: 61 (63) 65 (67) cm

Sleeve length: 46 (47) 48 (49) cm

Gauge

10 sts and 14 rows in stockinette stitch with one strand of each yarn held together on a 10 mm needle = 10 x 10 cm

Special abbreviations

M1: Make 1. Increase one stitch by lifting the chain between sts onto the left needle and knitting it through the back loop.

Skp: slip 1 stitch, knit the next stitch, pass the slipped stitch over the knit one.

Directions for knitting

One strand of each yarn are held together throughout. Both body and sleeves are knit in the round from the bottom up to the armholes. The all 3 parts are joined



and the yoke is worked in the round. The cable at the center of the front is worked from the chart from cast on to neck edge.

Body

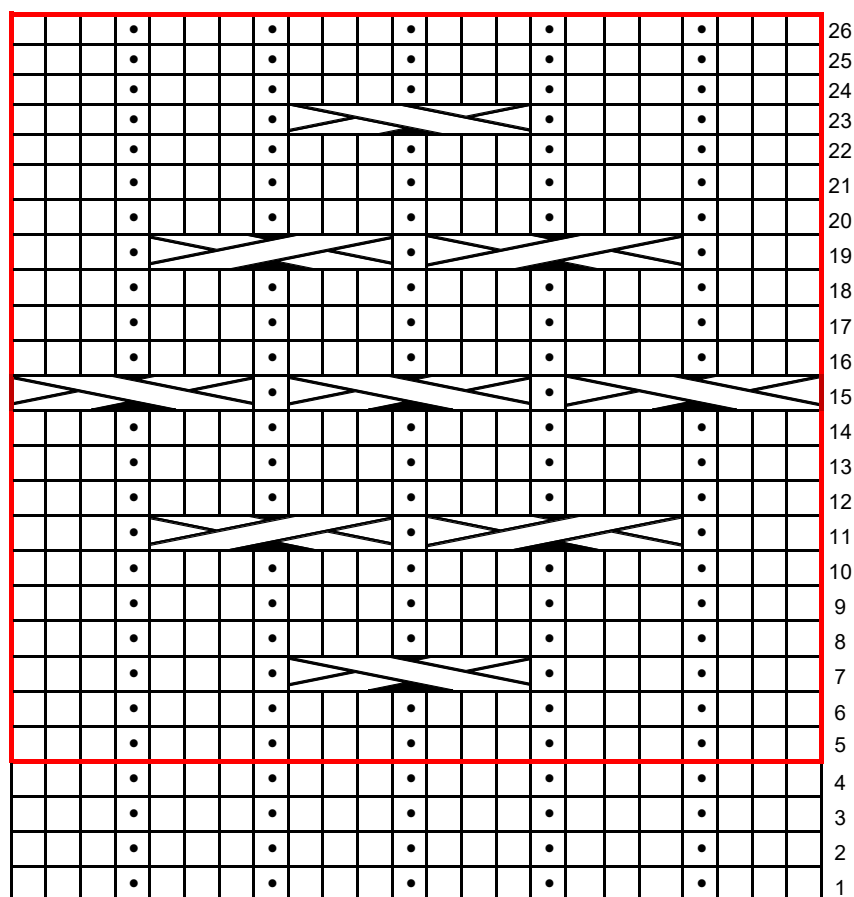
Cast on 113 (121) 129 (137) sts on a 10 mm circular needle with one strand of each yarn held together. Join in the round and place a marker for the beginning of the round. Place one more marker after 59 (63) 67 (71) sts. There are now 59 (63) 67 (71) sts

for the front and 54 (58) 62 (66) sts for the back. Next round: p2 (-) p2 (-), *k2, p2*, repeat from * to * for a total of 16 (20) 20 (24) sts, work chart (23 sts), p2, repeat from * to * to end of round. Work as established for 10 cm.

Then continue by working the chart mid front and reverse stockinette stitch (purl from the RS) across remaining sts until the work measures 38 (39) 40 (41) cm.

Next round: *Bind off 2 sts, work in pattern to 2 sts

Cable chart



knit

purl



slip 4 sts to a cable needle and hold to front of work, k3, slip the stitch furthest on the left on the cable needle back onto the left needle and purl it, k3 from cable needle



slip 4 sts to a cable needle and hold to back of work, k3, slip the stitch furthest to the left on the cable needle back onto the left needle and purl it, k3 from cable needle

pattern repeat

before marker, bind off 4 sts, work in reverse stockinette stitch to 2 sts before marker, bind off 2 sts. Let the work rest on the needle, while the sleeves are worked.

Sleeves

Cast on 24 sts on 10 mm double-pointed needles with one strand of each yarn held together. Join in the round and place a marker for the beginning of the round.

Work ribbing: K1, *p2, k2*. Repeat from * to *. End with p2, k1.

Work ribbing for 10 cm.

Continue reverse stockinette stitch (purl from the RS).

Increase round: P1, M1, purl to last stitch on round, M1, p1.

Work an increase round every 6th (6th) 5th (5th) round a total of 7 (8) 9 (10) times. There are now 38 (40) 42 (44) sts on the needle.

Work straight in reverse stockinette stitch until sleeve measures 46 (47) 48 (49) cm.

Next round: Purl to last 2 sts, bind off 4 sts.

Work a second sleeve the same way as the first.

Yoke

Join the sleeves to the body over where sts were bound off for the armholes on either side of the body. Place a marker each of the 4 places where body and sleeves meet. There are now 173 (185) 197 (209) sts on the needle.

Begin the round at the marker between the back and left sleeve. Continue working the charted cable pattern across the center 23 sts of the front. Knit 1 stitch on either side of each marker, work all remaining sts in reverse stockinette stitch.

Work the first round without decreases, then work the following decreases every other round: *Skp, work to 2 sts before marker, k2tog*. Repeat from * to * to end of round.

Work a total of 15 (16) 17 (18) decrease rounds.

There are now 53 (57) 61 (65) sts on the needle.

Work around in k2, p2 ribbing, making sure the k2 around each marker matches up with the ribbing and continuing to the cable according to the chart across the 23 sts at the center of the front. Work a total of 10 cm of ribbing. Bind off in pattern.

Finishing

Sew up the little hole under each sleeve. Weave in all ends.

Gently rinse the work, put it through a (dry) spin cycle in the washing machine and lay it on a flat surface to dry.

