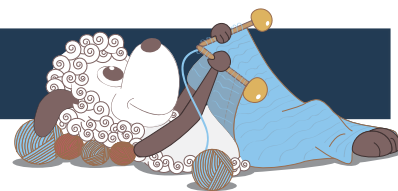


Esplanaden - a lovely cardigan



Design: Ditte Lerche

By popular demand we have added a new member of the family of designs that has sprung from the popular Kastellet design from our SS19 collection.

Esplanaden is worked in a combination of our Arwetta Classic and Tilia yarns, which both come in an extensive range of colours. The charmingly simple eyelet pattern on the yoke and the elegant fit of this cardigan makes this an instant classic. Esplanaden works just as well in your everyday wardrobe as it does if styled with a cute summer dress for a festive occasion.

1st English edition - January 2021 © Filcolana A/S
English translation: Signe Strømgaard

Materials

250 (250) 300 (300) 350 g Arwetta Classic by Filcolana in colour 361 (Madeira Rose)
125 (125) 150 (150) 150 g Tilia by Filcolana in colour 361 (Madeira Rose)
3 mm and 4 mm circular needles, 40 cm and 80 cm
3 mm and 4 mm double-pointed needles (if not using the magic loop technique)
Stitch markers
7 (8) 8 (9) 9 buttons

Sizes

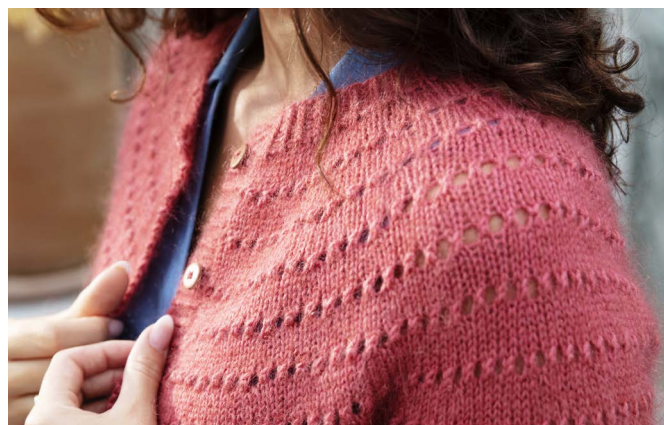
S (M) L (XL) 2XL

Measurements

Body, chest: 82-90 (91-98) 99-109 (110-116) 117-126 cm
Cardigan, chest: 90 (98) 108 (116) 126 cm
Sleeve length: 45 cm
Total length: 49 (53) 55 (61) 61 cm

Gauge

21 sts and 28 rows in stockinette stitch with one strand of each yarn held together on 4 mm needles = 10 x 10 cm



Special abbreviations

M1: Make 1. Increase one stitch by lifting the chain between sts onto the left needle and knitting it through the back loop.

Skp: Slip 1 stitch, knit the next stitch, pass the slipped stitch over the knit stitch.

tbl: Through the back loop.

Directions for knitting

The cardigan is worked back and forth from the top down, with a round yoke in a simple eyelet pattern. After the yoke has been knitted, the work is divided into sleeves and body and each section is finished separately. Front edges are knitted on at the end.

1 strand of Arwetta Classic and 1 strand of Tilia are held together throughout.

Yoke

Cast on 89 (95) 95 (95) 97 sts on a 3 mm circular needle with 1 strand of Arwetta Classic and 1 strand of Tilia held together.

Work back and forth in rib as follows:

Row 1 (WS): P1, *p1 tbl, k1*, repeat from * to * to end of row.

Row 2 (RS): *P1, k1 tbl*, repeat from * to * to the last stitch, k1.

Repeat Row 1 and 2 three more times.

Change to a 4 mm needle.

Work in pattern with increases as follows:

Row 1 (WS): Purl to the last stitch, k1.

Row 2 (RS): Work increases as described below.

Row 3: Purl to the last stitch, k1.

Row 4: P1, knit to end of row.

Row 5: Work as Row 3.

Row 6: Work as Row 4.

Row 7: Work as Row 3.

Row 8: P1, k2tog, *yarn over, k2tog*, repeat from * to * to the last stitch, k1.

(Note that there is one stitch less on the row after each repeat of Row 8. This is taken into account in the pattern)

Repeat these 8 pattern rows, while working increases on Row 2 as described below:

1st increase row: Knit 4 (10) 10 (10) 2 sts, *M1, k5*, repeat from * to * to end of row. There are now a total of 106 (112) 112 (112) 116 sts on the needle.

2nd increase row: Knit 10 (6) 6 (6) 10 sts, *M1, k5*, repeat from * to * to end of row. There are now a total of 124 (132) 132 (132) 136 sts on the needle.

3rd increase row: Knit 9 (5) 5 (5) 9 sts, *M1, k6*, repeat from * to * to end of row. There are now a total of 142 (152) 152 (152) 156 sts on the needle.

4th increase row: Knit 3 (1) 1 (1) 5 sts, *M1, k6*, repeat from * to * to end of row. There are now a



total of 164 (176) 176 (176) 180 sts on the needle.

5th increase row: Knit 1 (1) 1 (1) 5 sts, *M1, k6*, repeat from * to * to end of row. There are now a total of 190 (204) 204 (204) 208 sts on the needle.

6th increase row: Knit 3 (5) 5 (5) 9 sts, *M1, k6*, repeat from * to * to end of row. There are now a total of 220 (236) 236 (236) 240 sts on the needle.

7th increase row: Knit 2 (4) 4 (4) 8 sts, *M1, k7*, repeat from * to * to end of row. There are now a total of 250 (268) 268 (268) 272 sts on the needle.

8th increase row: Knit 1 (3) 3 (3) 7 sts, *M1, k8*, repeat from * to * to end of row. There are now a total of 280 (300) 300 (300) 304 sts on the needle.

Size L (XL) 2XL only

9th increase row: Knit - (-) 2 (2) 6 sts, *M1, k9*, repeat from * to * to end of row. There are now a total of - (-) 332 (332) 336 sts on the needle.

Size (XL) 2XL only

10th increase row: Knit - (-) - (7) 5 sts, *M1, knit - (-) - (12) 6 sts*, repeat from * to * to end of row. There are now a total of - (-) - (358) 390 sts on the needle.

All sizes

The pattern has now been worked a total of 8 (8) 9 (10) 10 times and there are 279 (299) 331 (357) 389 sts on the needle.

Work 3 (7) 3 (3) 7 rows in stockinette stitch (ending on a WS row).

Now divide the work for sleeves and body as follows (RS): Knit 42 (46) 50 (56) 60 sts (left front), place the next 56 (58) 66 (68) 74 sts on a stitch holder (left sleeve), cast on 10 (10) 10 (12) 12 new sts in extension of the sts on the needle for the underarm, knit 83 (91) 99 (109) 121 sts (back), place the next 56 (58) 66 (68) 74 sts on a stitch holder (right sleeve), cast on 10 (10) 10 (12) 12 new sts in extension of the sts on the needle for the underarm, knit 42 (46) 50 (56) 60 sts (right front).

Body

Work back and forth in stockinette stitch across the 187 (203) 219 (245) 267 sts for the body until the work measures 44 (48) 50 (56) 56 cm (measured mid back). End on a WS row.

Change to a 3 mm needle.

Work rib as follows:

Row 1 (RS): P1, *k1 tbl, p1*, repeat from * to * to end of row.

Row 2 (WS): *K1, p1 tbl*, repeat from * to * to the last stitch, k1.

Repeat Row 1 and 2 until rib measures 5 cm.

Bind off in rib.

Sleeves

The sleeve is worked on a 4 mm, 40 cm circular needle with 1 strand of Arwetta Classic and 1 strand of Tilia held together. Start in the middle of the underarm sts of the body and pick up and knit 5 (5) 5 (6) 6 sts along the edge, ending at the sleeve sts on the stitch holder, knit across the 56 (58) 66 (68) 74 sleeve sts, then pick up and knit 5 (5) 5 (6) 6 sts along the underarm sts on the body, ending in the middle. Join in the round and place a marker for the beginning of the round. There are now a total of 66 (68) 76 (80) 86 sts on the needle.

Work in the round in stockinette stitch, while working an decrease round every 8th round a total of 12 (13) 14 (14) 14 times.

Decrease round: K1, k2tog, knit to 3 sts before marker, skp, k1.

There are now 42 (42) 48 (52) 58 sts left on the needle.

Continue in stockinette stitch until the sleeve measures 40 cm from the underarm.

Change to a 3 mm needle and work 5 cm of twisted rib (k1 tbl, p1).

Bind off in rib.

Work the second sleeve the same way as the first.

Right front edge

Pick up and knit 95 (105) 105 (119) 119 sts along the right front edge with a 3 mm needle and 1 strand of Arwetta Classic and 1 strand of Tilia held together.

Row 1 (WS): *P1 tbl, k1*, repeat from * to * to the last stitch, p1 tbl.

Row 2 (RS): *K1 tbl, p1*, repeat from * to * to the last stitch, k1 tbl.

Row 3: Work as Row 1.

Row 4: Work as Row 2.

Row 5: Work as Row 1.

Row 6 (buttonholes): Knit 4 (2) 2 (2) 2 sts in rib, k2tog tbl, yarn over, *work 12 sts in rib, k2tog tbl, yarn over*, repeat from * to * a total of 6 (7) 7 (8) 8 times, work 5 (3) 3 (3) 3 sts in rib.

Repeat Row 1 and 2 twice more.

Bind off in rib (from the WS).

Left front edge

Pick up and knit 95 (105) 105 (119) 119 sts along the left front edge with a 3 mm needle and 1 strand of Arwetta Classic and 1 strand of Tilia held together.

Row 1 (WS): *P1 tbl, k1*, repeat from * to * to the last stitch, p1 tbl.

Row 2 (RS): *K1 tbl, p1*, repeat from * to * to the last stitch, k1 tbl.

Repeat Row 1 and 2 four more times.

Bind off in rib (from the WS).

Finishing

Sew the buttons in across from the buttonholes.

Weave in all ends.